

#### 8.2.6.2. E801: ON/OFF command for vertical motor not changed on planned time

This message is displayed when there is a fault on the column movement.

Check that the column movement power supply fuse F4 is not blown.  
Check the safety column movement microswitches work correctly, otherwise replace the microswitches assembly (microswitch + cable).  
Check CANBus cable X11-X11 and replace it if faulty, otherwise replace the Column CPU board.

#### Electrical and mechanical parts

Rif.	Order code	Description	Note
1	6207090700	Column end travel microswitches with cable	
	4291309700	Microswitch	
2	6607091800	Column actuator M1	
3	4291415900	Mains switch	
4	6207090200	Up / Down column switch S2	
5	4492823000	+24V switch mode power supply	
6	5807101000	Column CPU board A1	
7	4192212200	Line filter Z1	
8	4591845200	RJ45 connector	
9	6606160500	X-ray push button with cable	
10	5406160100	Console SX overlay keyboard	
11	5406160200	Console DX overlay keyboard	
12	6607098300	Frankfurt plane laser	
13	6607098400	Mid Sagittal plane laser	
14	6607098600	Mirror	
	5106094100	Mirror I-Max Touch logo	
15	6607099000	Wall fixing brackets kit including spacers and screws	
	6607091900	US adapter plates	
16	4492822900	Transformer T1	only for 110-120V version
--	6607090200	Fuses kit	220-240V version
	6607090300	Fuses kit	110-120V version

Column Stop Start  
Micro-Switches

1

COLUMN CPU  
BOARD

6

5

7

Column  
Fuses

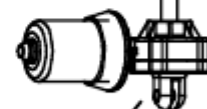
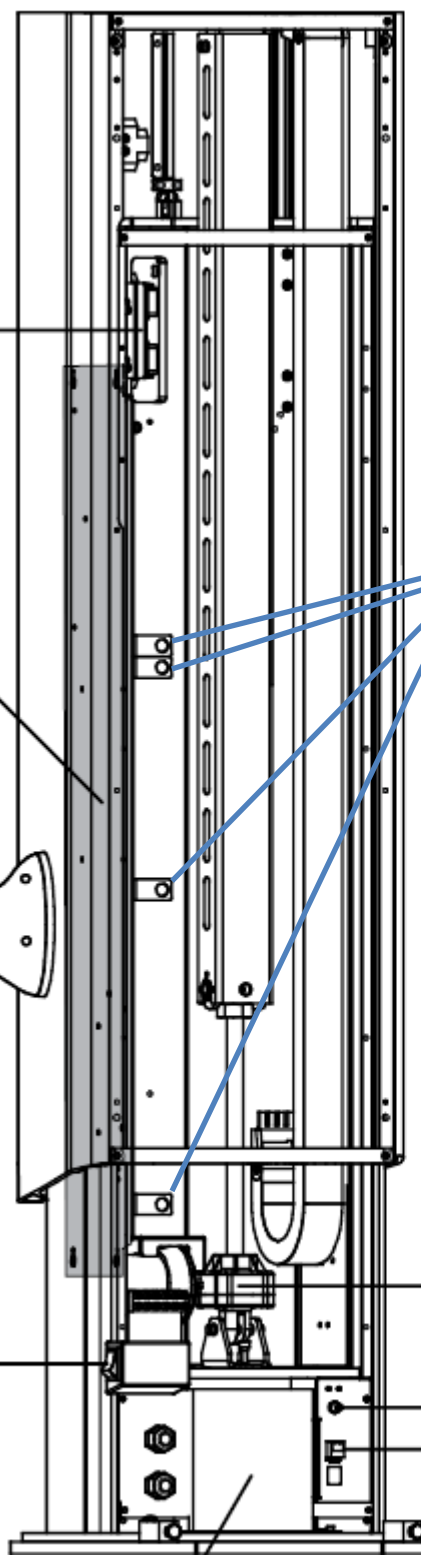
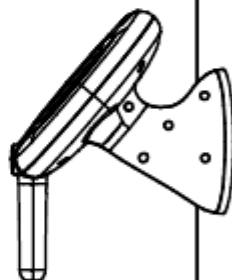
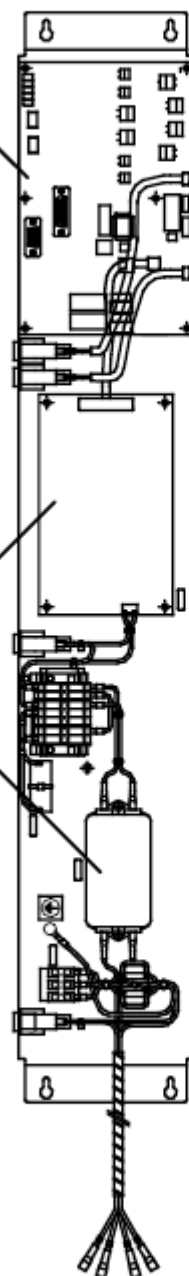
2

4

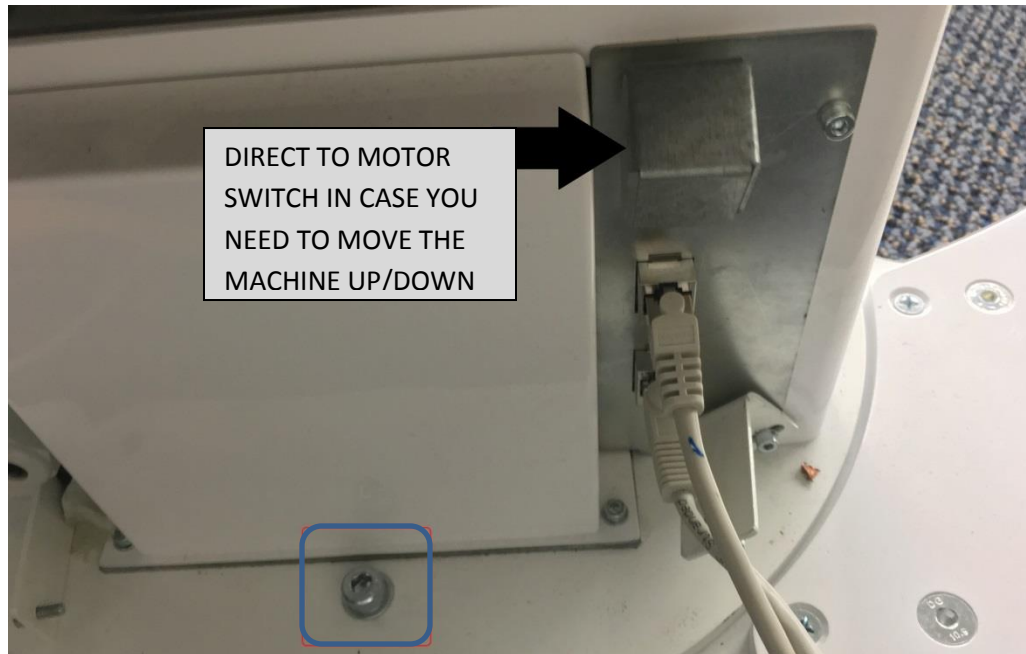
8

3

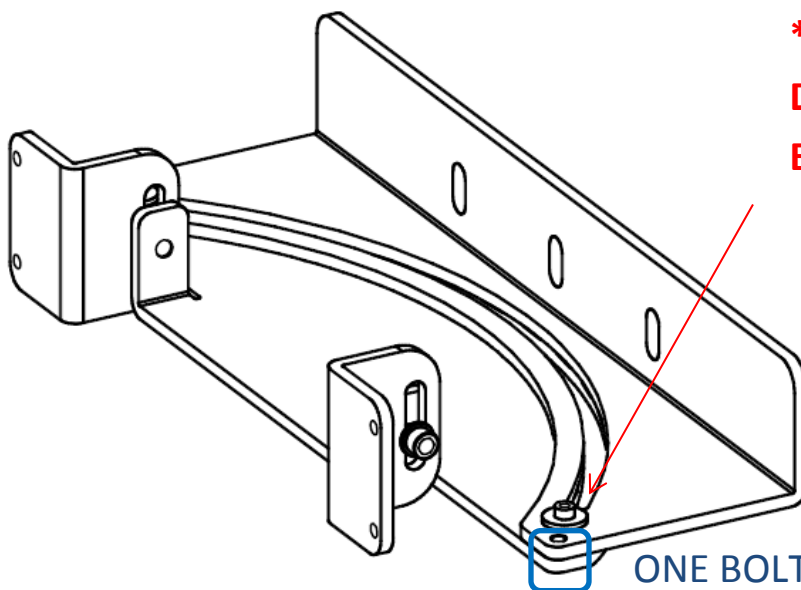
16



# To Rotate Column Clockwise



REMOVE BOLT AT BASE



**\*\*\*WARNING\*\*\***

**DO NOT REMOVE THE  
BOLT INSIDE THE TRACK**

ONE BOLT AT EACH CORNER OF  
UPPER WALL BRACKET